

# DREAMINGLY AMAZING AND FASCINATING BY CONSTANCE GUISSET

**DESIGN – CONSTANCE  
GUISSET, MAYENNE**

THIS FIRST SOLO EXHIBITION OF CONSTANCE GUISSET AT THE CHAPELLE DES CALVAIRIENNE IN MAYENNE IS THE OPPORTUNITY TO SHOW THE CONNECTION BETWEEN HER SEVEN YEARS OF VARIOUS WORKS IN DESIGN, SCENOGRAPHY AND VIDEO.



// All Photos ©Photo Guisset

Born in 1976, Constance Guisset lives and works in Paris. After studying politics and economics at the ESSEC and at Sciences Po and after a year of working for an MP at the Parliament of Tokyo, she opted for a creative career. As a manager at the Ronan and Erwan Bouroullec Studio between 2003 and 2010, she graduated in 2007 from the ENSCI-Les Ateliers. In 2008 she won the Paris Grand Prix du Design in the debutante category, and the Prix du Public at the noailles Design Parade in 2009. The following year Maison et Objets, Now! Design à Vivre nominated her one of the ten top Designers of the year and she won the Audi Talents award. Her research projects include various applications in set design, object design and videos. Her work reflects visual illusions and surprise. She creates moving objects, designed to amaze and fascinate.







GENEROUS MODELS FLY SUSPENDED IN THE AIR LIKE A COLLECTION OF CLOTHES FRAMED IN COAT RACKS.

The nave hosts edited objects. Lamps, armchairs, mirrors, benches, pieces of cutlery, etc. are hung from the ceiling to the ground. The whole scene is visible at first sight but allows the visitor to experience several successive sensations and perspectives. The two lateral chapels are focused on video and scenography. In the first room, the visitor is invited to discover a movie from a round sofa made of Mayenne fabric. The second chapel

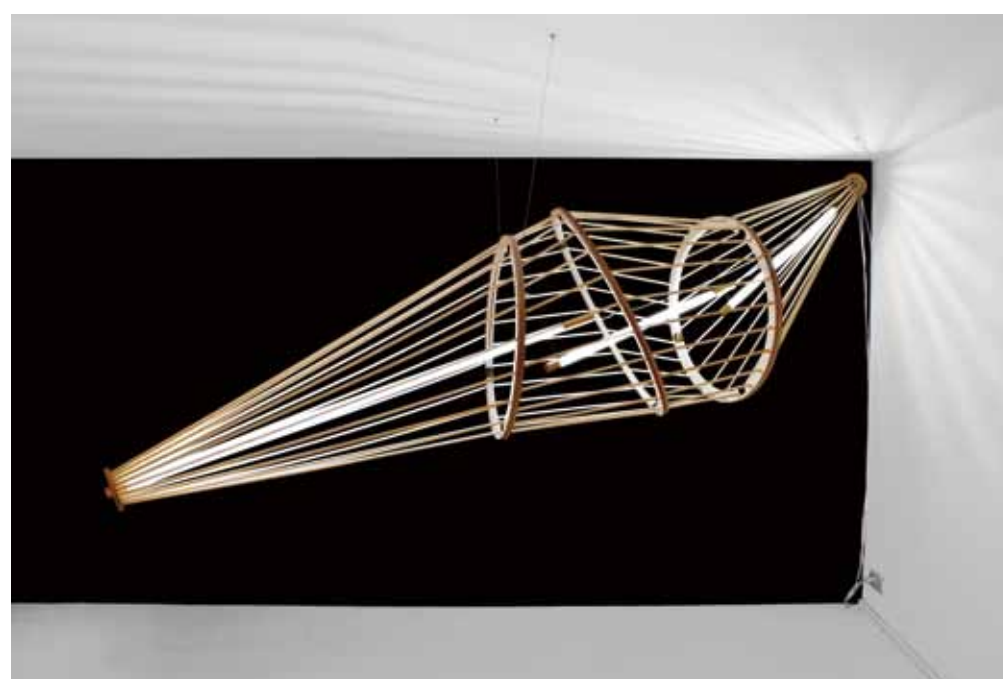
houses a light installation, a 'drapé' tailored for the space that illustrates the in situ scenographic work. Just behind the wall-altarpiece, the choir of nuns is occupied by a multitude of models. A garden of miniatures is placed on the ground while generous models fly suspended in the air like a collection of clothes framed in coat racks. Along the walls lie picture-legends that trace the review of work in photography.



**It unveils the creation process by presenting hundreds of scale models that illustrate incessant shape experimentation.**

A GARDEN OF MINIATURES IS PLACED ON THE GROUND.





SCENOGRAPHY AND CURATING OF THE FLAGSHIP STORE MOLteni&C DADA.



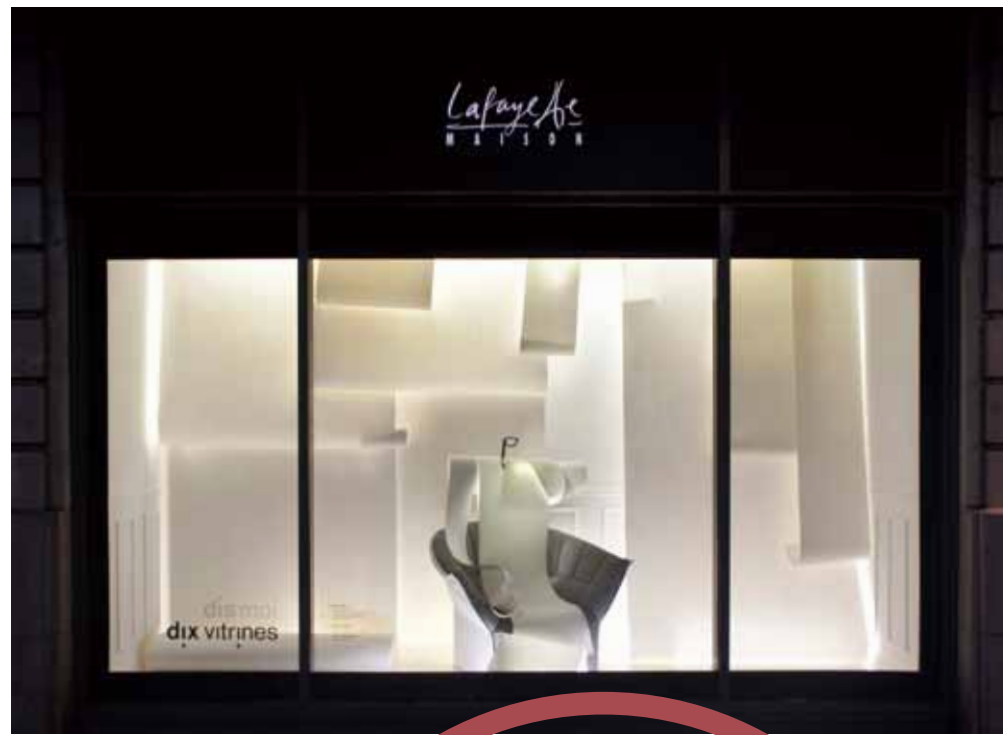
# CONVERSATIONS AVEC AFRA & TOBIA SCARPA

CLIENT \_ Molteni

The Molteni&C Dada Flagship Store is an exceptional place conceived by Afra and Tobia Scarpa in 1979. Constance decided to empty the showroom so as to highlight the thinness of details of its architecture. Contemporary furniture and pieces from the first collections designed by the two architects face each other. They seem to dance under wooden structures designed for the occasion. A publication conceived in collaboration with Constance Rubini proposes a treasure hunt of the architecture details. This work was awarded the best scenography for Paris Designer's Days 2011.

**They seem to dance under wooden structures designed for the occasion.**





# LAFAYETTE

CLIENT \_  
Galeries Lafayette Maison

WINDOW DISPLAYS FOR GALERIES LAFAYETTE MAISON.



**Lamps that celebrate the idea of light as a real presence.**

# CAPE

Between the bird and the dress it seems to be flying elegantly in the space. The translucent plastic makes the presence soft and ghosted, almost immaterial.

# VERTIGO



**A lamp whose switch levitates when the light is on.**

An enveloping lamp that creates a space of intimacy. The lightness of the lamp (less than 500g for 2m<sup>2</sup> amplitude) makes it mobile to the rhythm of the air – it turns softly, projecting an almost transparent graphic space between the floor and the ceiling.

# FIAT LUX

CLIENT \_  
Grégory Cid

When the light is off, the switch is an autonomous sphere that can be stocked onto the lamp thanks to a magnet system. The user becomes an illusionist by turning the lamp on, just by approaching the switch. This work is prototype only.





# Two lamps made of ceramic pieces set upside down.

## DESSUS-DESSOUS AND DESSOUS-DESSUS

CLEINT \_  
Catberro  
CERAMIST \_  
Sandrine Bringard

The convex volumes are made of ceramics tainted in Bleu de Sèvres.  
The shading blue gradations were born from research on colour revelation by laser. The pigments in the material are brought to the surface, as if tattooed on the skin of the dish. It is as if the chromatic DNA of tainted ceramics were made visible by a light chemical burn.  
The laser reveals the ceramics' intrinsic beauty but it also makes invisible imperfections emerge. The running-out of the liquid ceramics is to be seen, like a soft blow on the pigments.  
Pattern comes with the convexity of the volumes. Colours fade with the slope – they disappear when the laser lens blurs.

THE PIGMENTS IN THE MATERIAL ARE BROUGHT TO THE SURFACE, AS IF TATTOOED ON THE SKIN OF THE DISH.



## FRANCIS

CLIENT \_  
Petite Friture

Make-up palette or ageing signs? The users contemplate themselves through the luminous oxydation reminiscent of a planet in an illusion of convexity. This product design work won Wallpaper\* Design Awards 2012, Best Use of Colour.



## A circular mirror born from chromatic experiences with pigments on water.

# DANCING CHAIR



The seat rests in the wooden structure, as if suspended in a crinoline. It was presented at the Paris and Milan Furniture Fair 2009.

## A rocking chair and a footrest ensemble.



# SOL

CLEINT \_  
Molteni

## A rocking chair made of laser-cut aluminium, bent and lacquered.

Its complete asymmetry in the shape and in the lines creates an illusion of movement and allows surprising views from each side. Comfort has been the priority in the chair, as the angles and heights are very natural. This comfort has been reinforced by the use of cushions. The chair can be imagined in its transparency with seat and round cushions in the back. But it exists also with a large cushion in the back whose sewing follows the lines of the chair. The name is Sol, after the Latin word for the sun. Rays are shining in all directions and formal vocabulary is about roundness and softness. It is a joyful and shining chair, quite free in its asymmetry, popping out with lightness.

